

MLS 系列方型連接器：



MLS - ①① ②② - ③③③ ④④④ ⑤

MLS：方型連接器代碼。

標示①：安裝孔孔徑。

標示②：芯數。

標示③：安裝插座類別(短柄端)。

RM:輸入三眼法蘭安裝插座。

RF:輸出三眼法蘭安裝插座。

標示④：插頭類別(長柄端)。

PM:輸入插頭。

PF:輸出插頭。

GPM:輸入插頭(接波浪管)。


GPF:輸出插頭(接波浪管)。

標示⑤：浪管尺寸類別

3：3/8 浪管尺寸。

4：1/2 浪管尺寸。


MLS-□□□-RM孔徑、芯數規格表

MLS-□□□-RM	孔徑 28		孔徑 24		孔徑 20		孔徑 16		孔徑 12	
	芯數	型號	芯數	型號	芯數	型號	芯數	型號	芯數	型號
	2	MLS-282-RM	9	MLS-2409-RM	2	MLS-202-RM	2	MLS-162-RM	2	MLS-122-RM
	3	MLS-283-RM	10	MLS-2410-RM	3	MLS-203-RM	3	MLS-163-RM	3	MLS-123-RM
	4	MLS-284-RM	12	MLS-2412-RM	4	MLS-204-RM	4	MLS-164-RM	4	MLS-124-RM
	5	MLS-285-RM	15	MLS-2415-RM	5	MLS-205-RM	5	MLS-165-RM	5	MLS-125-RM
	6	MLS-286-RM	17	MLS-2417-RM	6	MLS-206-RM	6	MLS-166-RM	6	MLS-126-RM
	7	MLS-287-RM	19	MLS-2419-RM	7	MLS-207-RM	7	MLS-167-RM	7	MLS-127-RM
	8	MLS-288-RM			8	MLS-208-RM	8	MLS-168-RM		
	10	MLS-2810-RM			10	MLS-2010-RM	9	MLS-169-RM		
	12	MLS-2812-RM			12	MLS-2012-RM				
	14	MLS-2814-RM			14	MLS-2014-RM				
	16	MLS-2816-RM								
	17	MLS-2817-RM								
	19	MLS-2819-RM								
	20	MLS-2820-RM								
24	MLS-2824-RM									
26	MLS-2826-RM									

MLS-□□□-RF孔徑、芯數規格表

MLS-□□□-RF	孔徑 28		孔徑 24		孔徑 20		孔徑 16		孔徑 12	
	芯數	型號	芯數	型號	芯數	型號	芯數	型號	芯數	型號
	2	MLS-282-RF	9	MLS-2409-RF	2	MLS-202-RF	2	MLS-162-RF	2	MLS-122-RF
	3	MLS-283-RF	10	MLS-2410-RF	3	MLS-203-RF	3	MLS-163-RF	3	MLS-123-RF
	4	MLS-284-RF	12	MLS-2412-RF	4	MLS-204-RF	4	MLS-164-RF	4	MLS-124-RF
	5	MLS-285-RF	15	MLS-2415-RF	5	MLS-205-RF	5	MLS-165-RF	5	MLS-125-RF
	6	MLS-286-RF	17	MLS-2417-RF	6	MLS-206-RF	6	MLS-166-RF	6	MLS-126-RF
	7	MLS-287-RF	19	MLS-2419-RF	7	MLS-207-RF	7	MLS-167-RF	7	MLS-127-RF
	8	MLS-288-RF			8	MLS-208-RF	8	MLS-168-RF		
	10	MLS-2810-RF			10	MLS-2010-RF	9	MLS-169-RF		
	12	MLS-2812-RF			12	MLS-2012-RF				
	14	MLS-2814-RF			14	MLS-2014-RF				
	16	MLS-2816-RF								
	17	MLS-2817-RF								
	19	MLS-2819-RF								
	20	MLS-2820-RF								
24	MLS-2824-RF									
26	MLS-2826-RF									


MLS-□□□-PM孔徑、芯數規格表

MLS-□□□-PM	孔徑 28		孔徑 24		孔徑 20		孔徑 16		孔徑 12	
	芯數	型號	芯數	型號	芯數	型號	芯數	型號	芯數	型號
	2	MLS-282-PM	9	MLS-2409-PM	2	MLS-202-PM	2	MLS-162-PM	2	MLS-122-PM
	3	MLS-283-PM	10	MLS-2410-PM	3	MLS-203-PM	3	MLS-163-PM	3	MLS-123-PM
	4	MLS-284-PM	12	MLS-2412-PM	4	MLS-204-PM	4	MLS-164-PM	4	MLS-124-PM
	5	MLS-285-PM	15	MLS-2415-PM	5	MLS-205-PM	5	MLS-165-PM	5	MLS-125-PM
	6	MLS-286-PM	17	MLS-2417-PM	6	MLS-206-PM	6	MLS-166-PM	6	MLS-126-PM
	7	MLS-287-PM	19	MLS-2419-PM	7	MLS-207-PM	7	MLS-167-PM	7	MLS-127-PM
	8	MLS-288-PM			8	MLS-208-PM	8	MLS-168-PM		
	10	MLS-2810-PM			10	MLS-2010-PM	9	MLS-169-PM		
	12	MLS-2812-PM			12	MLS-2012-PM				
	14	MLS-2814-PM			14	MLS-2014-PM				
	16	MLS-2816-PM								
	17	MLS-2817-PM								
	19	MLS-2819-PM								
	20	MLS-2820-PM								
	24	MLS-2824-PM								
26	MLS-2826-PM									

MLS-□□□-PF孔徑、芯數規格表

MLS-□□□-PF	孔徑 28		孔徑 24		孔徑 20		孔徑 16		孔徑 12	
	芯數	型號	芯數	型號	芯數	型號	芯數	型號	芯數	型號
	2	MLS-282-PF	9	MLS-2409-PF	2	MLS-202-PF	2	MLS-162-PF	2	MLS-122-PF
	3	MLS-283-PF	10	MLS-2410-PF	3	MLS-203-PF	3	MLS-163-PF	3	MLS-123-PF
	4	MLS-284-PF	12	MLS-2412-PF	4	MLS-204-PF	4	MLS-164-PF	4	MLS-124-PF
	5	MLS-285-PF	15	MLS-2415-PF	5	MLS-205-PF	5	MLS-165-PF	5	MLS-125-PF
	6	MLS-286-PF	17	MLS-2417-PF	6	MLS-206-PF	6	MLS-166-PF	6	MLS-126-PF
	7	MLS-287-PF	19	MLS-2419-PF	7	MLS-207-PF	7	MLS-167-PF	7	MLS-127-PF
	8	MLS-288-PF			8	MLS-208-PF	8	MLS-168-PF		
	10	MLS-2810-PF			10	MLS-2010-PF	9	MLS-169-PF		
	12	MLS-2812-PF			12	MLS-2012-PF				
	14	MLS-2814-PF			14	MLS-2014-PF				
	16	MLS-2816-PF								
	17	MLS-2817-PF								
	19	MLS-2819-PF								
	20	MLS-2820-PF								
	24	MLS-2824-PF								
26	MLS-2826-PF									

MLS-□□□-GPM孔徑、芯數規格表

MLS-□□□-GPM	孔徑 28		孔徑 24		孔徑 20		孔徑 16		孔徑 12	
	芯數	型號	芯數	型號	芯數	型號	芯數	型號	芯數	型號
	2	MLS-282-GPM	9	MLS-2409-GPM	2	MLS-202-GPM	2	MLS-162-GPM	2	MLS-122-GPM
	3	MLS-283-GPM	10	MLS-2410-GPM	3	MLS-203-GPM	3	MLS-163-GPM	3	MLS-123-GPM
	4	MLS-284-GPM	12	MLS-2412-GPM	4	MLS-204-GPM	4	MLS-164-GPM	4	MLS-124-GPM
	5	MLS-285-GPM	15	MLS-2415-GPM	5	MLS-205-GPM	5	MLS-165-GPM	5	MLS-125-GPM
	6	MLS-286-GPM	17	MLS-2417-GPM	6	MLS-206-GPM	6	MLS-166-GPM	6	MLS-126-GPM
	7	MLS-287-GPM	19	MLS-2419-GPM	7	MLS-207-GPM	7	MLS-167-GPM	7	MLS-127-GPM
	8	MLS-288-GPM			8	MLS-208-GPM	8	MLS-168-GPM		
	10	MLS-2810-GPM			10	MLS-2010-GPM	9	MLS-169-GPM		
	12	MLS-2812-GPM			12	MLS-2012-GPM				
	14	MLS-2814-GPM			14	MLS-2014-GPM				
	16	MLS-2816-GPM								
	17	MLS-2817-GPM								
	19	MLS-2819-GPM								
	20	MLS-2820-GPM								
	24	MLS-2824-GPM								
26	MLS-2826-GPM									

MLS-□□□-GPF孔徑、芯數規格表

MLS-□□□-GPF	孔徑 28		孔徑 24		孔徑 20		孔徑 16		孔徑 12	
	芯數	型號	芯數	型號	芯數	型號	芯數	型號	芯數	型號
	2	MLS-282-GPF	9	MLS-2409-GPF	2	MLS-202-GPF	2	MLS-162-GPF	2	MLS-122-GPF
	3	MLS-283-GPF	10	MLS-2410-GPF	3	MLS-203-GPF	3	MLS-163-GPF	3	MLS-123-GPF
	4	MLS-284-GPF	12	MLS-2412-GPF	4	MLS-204-GPF	4	MLS-164-GPF	4	MLS-124-GPF
	5	MLS-285-GPF	15	MLS-2415-GPF	5	MLS-205-GPF	5	MLS-165-GPF	5	MLS-125-GPF
	6	MLS-286-GPF	17	MLS-2417-GPF	6	MLS-206-GPF	6	MLS-166-GPF	6	MLS-126-GPF
	7	MLS-287-GPF	19	MLS-2419-GPF	7	MLS-207-GPF	7	MLS-167-GPF	7	MLS-127-GPF
	8	MLS-288-GPF			8	MLS-208-GPF	8	MLS-168-GPF		
	10	MLS-2810-GPF			10	MLS-2010-GPF	9	MLS-169-GPF		
	12	MLS-2812-GPF			12	MLS-2012-GPF				
	14	MLS-2814-GPF			14	MLS-2014-GPF				
	16	MLS-2816-GPF								
	17	MLS-2817-GPF								
	19	MLS-2819-GPF								
	20	MLS-2820-GPF								
	24	MLS-2824-GPF								
26	MLS-2826-GPF									

MLS系列產品資料

主要技術參數

1、使用條件:

環境溫度: -55 +70 °C。
 相對濕度: 溫度達+40 °C時濕度達93%
 大氣壓力達1KPa
 振動: 加速度達100m/s
 沖擊: 加速度達250m/s
 防護等級: IP54
 使用壽命: ≥500次

2、材料:

殼體: 銅鋅合金
 接觸體: 插針銅(Cu59-1), 插孔錫磷青銅
 絕緣體: 電木 (酚醛樹脂)
 墊片: 硅橡膠
 彈墊、卡簧: 鋼絲

適用範圍

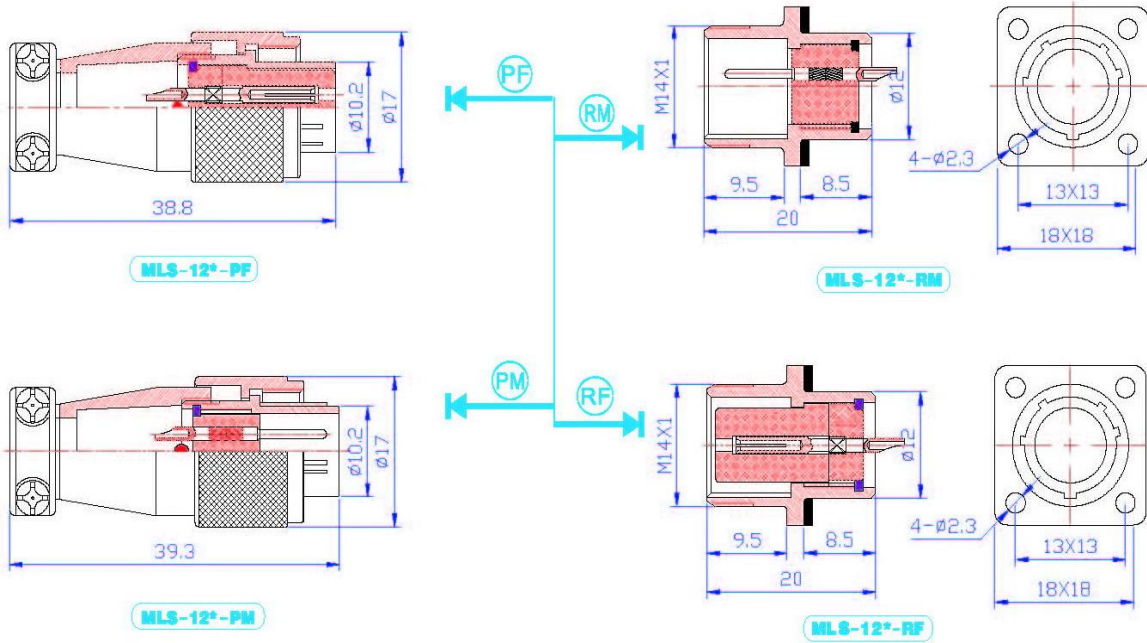
1、本系列產品廣泛應用於航空、航天、電子、船舶、通訊、鐵路、公路、煤炭安全監測和石油勘探、電力、電源等軍用、民用領域的動力線路、電氣連接、信號輸入輸出等場合。
 2、本系列產品不得超出各型號所規定許可範圍使用。
 3、本系列產品中所定電氣參數是在室溫環境下測試，在某些潮濕或塵埃或高溫或低溫環境下需酌情況降低要求處理。

單位: mm

型號	芯數	額定電流電壓	耐電壓	絕緣電阻	接觸體尺寸
12	2	4A-125V	1500V	1500MΩ	1.0
	3	4A-125V	1500V	1500MΩ	1.0
	4	4A-125V	1500V	1500MΩ	1.0
	5	4A-125V	1500V	1500MΩ	1.0
	6	4A-125V	1000V	1000MΩ	1.0
	7	4A-125V	1000V	1000MΩ	1.0
	16	2	7A-125V	1500V	1500MΩ
3		7A-125V	1500V	1500MΩ	1.6
4		5A-125V	1500V	1500MΩ	1.0
5		5A-125V	1500V	1500MΩ	1.0
6		5A-125V	1300V	1300MΩ	1.0
7		5A-125V	1300V	1300MΩ	1.0
8		5A-125V	1300V	1300MΩ	1.0
9		3A-125V	1000V	1000MΩ	1.0
20		2	10A-200V	2000V	1500MΩ
	3	10A-200V	2000V	1500MΩ	2.5
	4	7A-125V	2000V	1500MΩ	1.6
	5	7A-125V	2000V	1500MΩ	1.6
	6	7A-125V	1500V	1500MΩ	1.6
	7	7A-125V	1500V	1500MΩ	1.6
	8	5A-125V	1500V	1500MΩ	1.6
	10	3A-125V	1500V	1500MΩ	1.0
	12	3A-125V	1000V	1000MΩ	1.0
	14	3A-125V	1000V	1000MΩ	1.0
24	9	7A-125V	1500V	1500MΩ	1.6
	10	7A-125V	1500V	1500MΩ	1.6
	12	7A-125V	1500V	1500MΩ	1.6
	15	5A-125V	1500V	1000MΩ	1.0
	17	5A-125V	1000V	1000MΩ	1.0
	19	5A-125V	1000V	1000MΩ	1.0
28	2	25A-400V	2000V	2000MΩ	3.5
	3	25A-400V	2000V	2000MΩ	3.5
	4	25A-400V	2000V	2000MΩ	3.5
	5	20A-400V	2000V	2000MΩ	2.8
	6	20A-400V	2000V	2000MΩ	2.8
	7	15A-400V	2000V	2000MΩ	2.8
	8	15A-250V	2000V	2000MΩ	2.5
	10	10A-250V	2000V	2000MΩ	2.5
	12	10A-250V	2000V	2000MΩ	1.6
	14	10A-250V	2000V	2000MΩ	1.6
	16	10A-250V	2000V	2000MΩ	1.6
	17	7A-250V	2000V	2000MΩ	1.6
	19	7A-250V	2000V	2000MΩ	1.6
	20	7A-200V	1500V	1500MΩ	1.0
24	5A-200V	1500V	1500MΩ	1.0	
26	5A-125V	1500V	1500MΩ	1.0	

MLS-12*-**尺寸圖

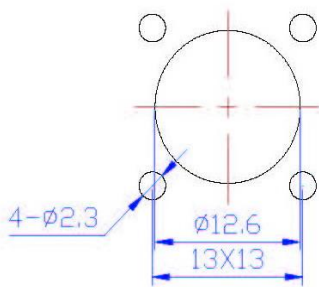
尺寸及裝配樣式



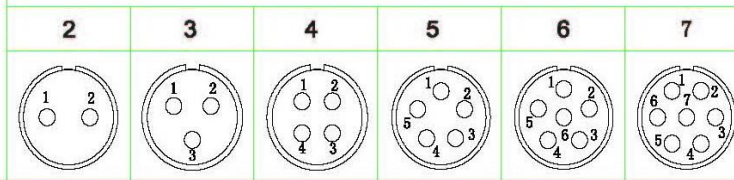
附件



安裝面板建議開孔尺寸

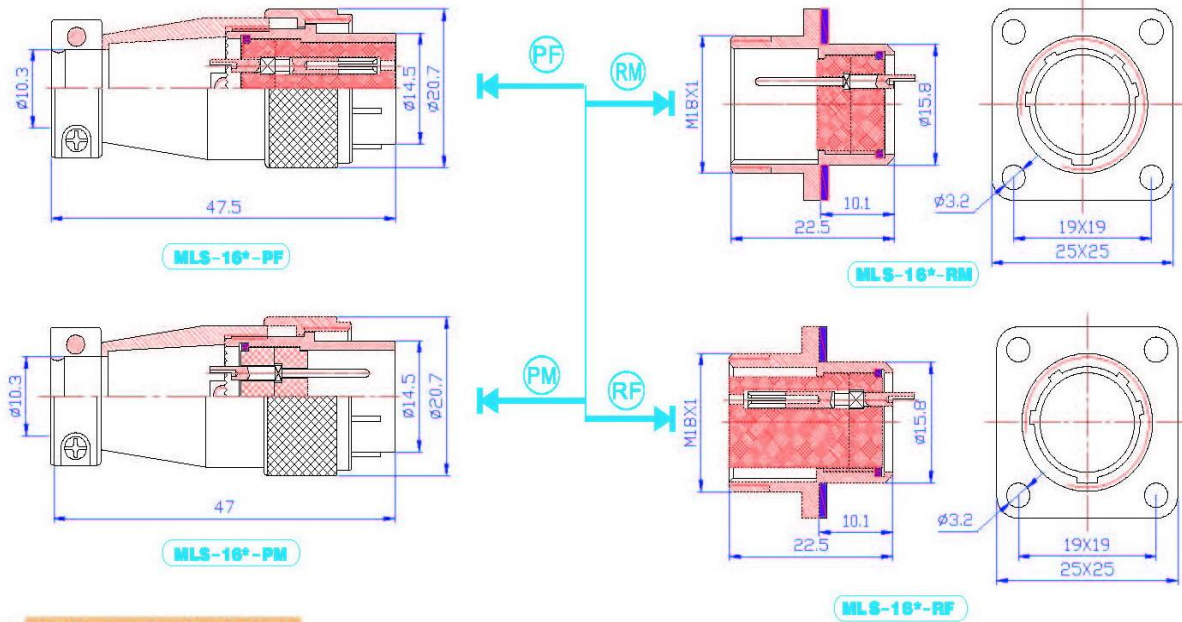


孔組排列樣式 (從插針方向看)

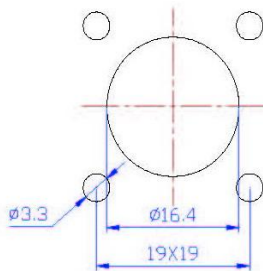


MLS-16*-**尺寸圖

尺寸及裝配樣式



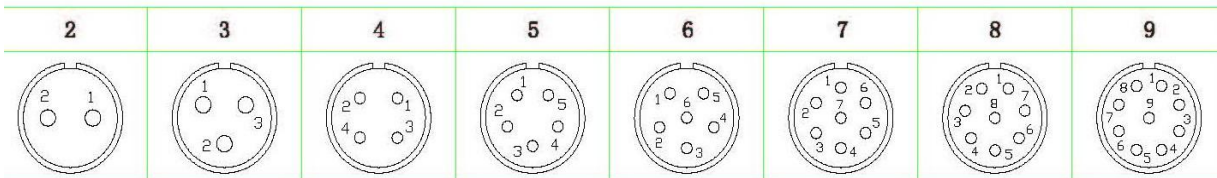
安裝面板建議開孔尺寸



附件

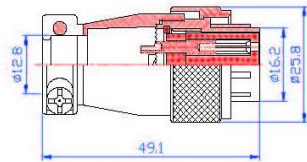


孔組排列樣式 (從插針方向看)

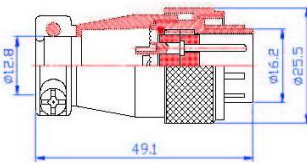


MLS-20*-**尺寸圖

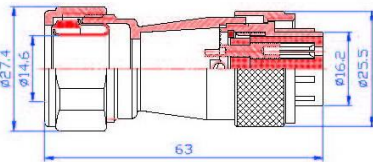
尺寸及裝配樣式



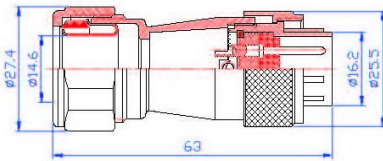
MLS-20*-PF



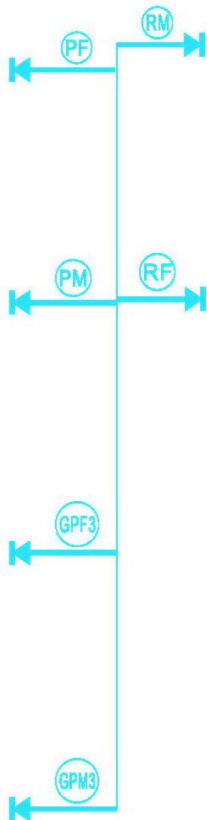
MLS-20*-PM



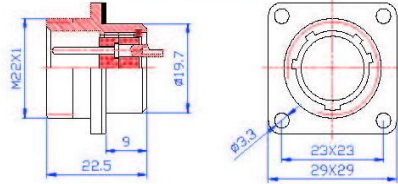
MLS-20*-GPF3



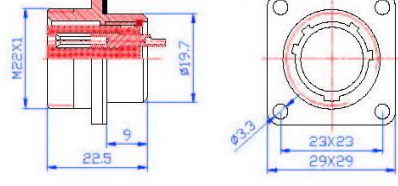
MLS-20*-GPM3



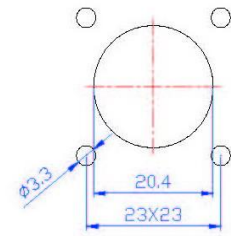
MLS-20*-RM



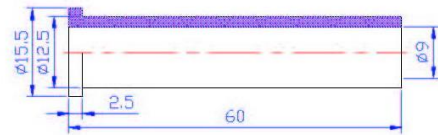
MLS-20*-RF



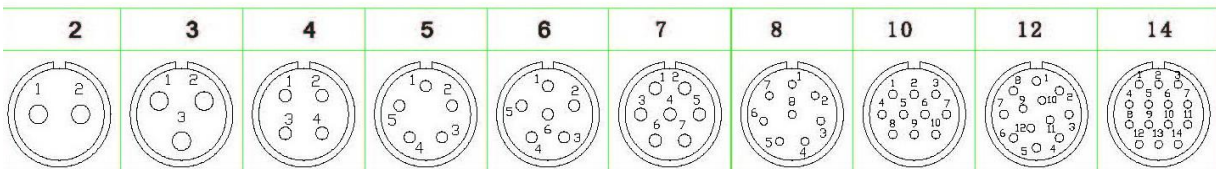
安裝面板建議開孔尺寸



附件

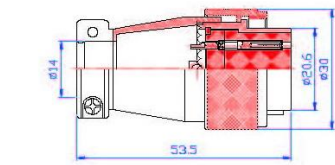


孔組排列樣式 (從插針方向看)

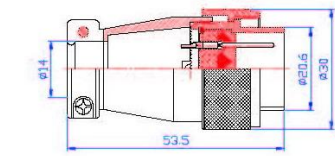


MLS-24*-**尺寸圖

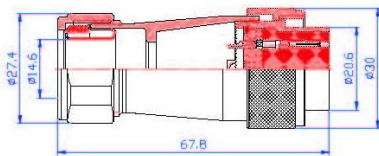
尺寸及裝配樣式



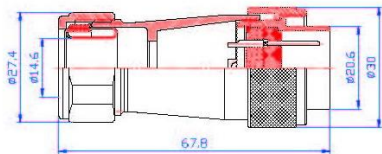
MLS-24*-PF



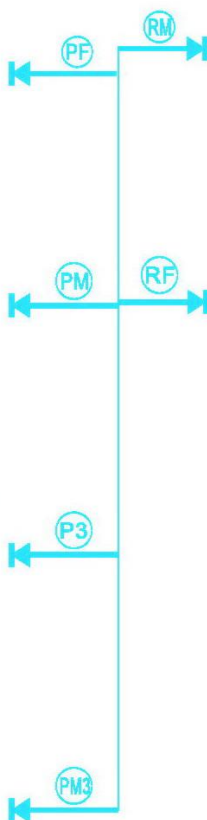
MLS-24*-PM



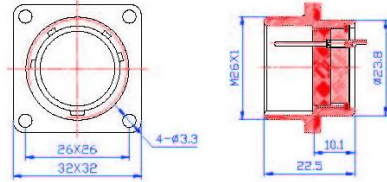
MLS-24*-GPF3



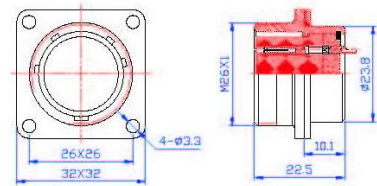
MLS-24*-GPM3



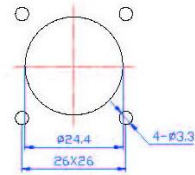
MLS-24*-RM



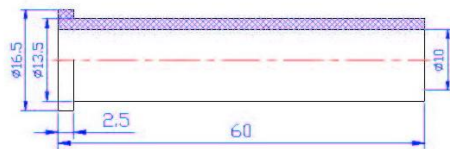
MLS-24*-RF



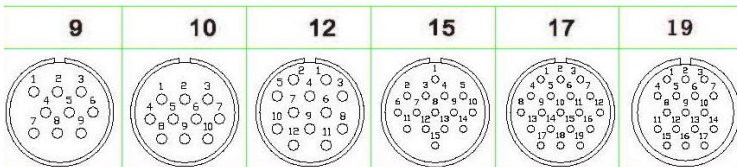
安裝面板建議開孔尺寸



附件

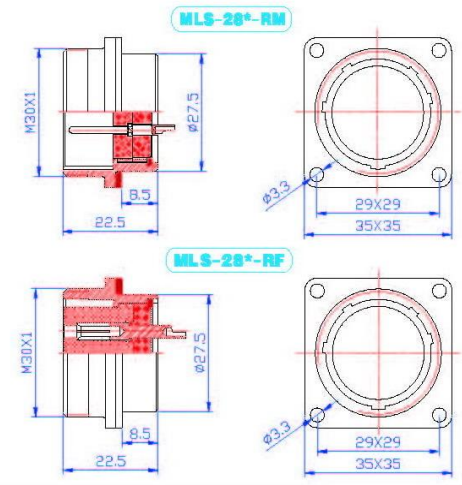
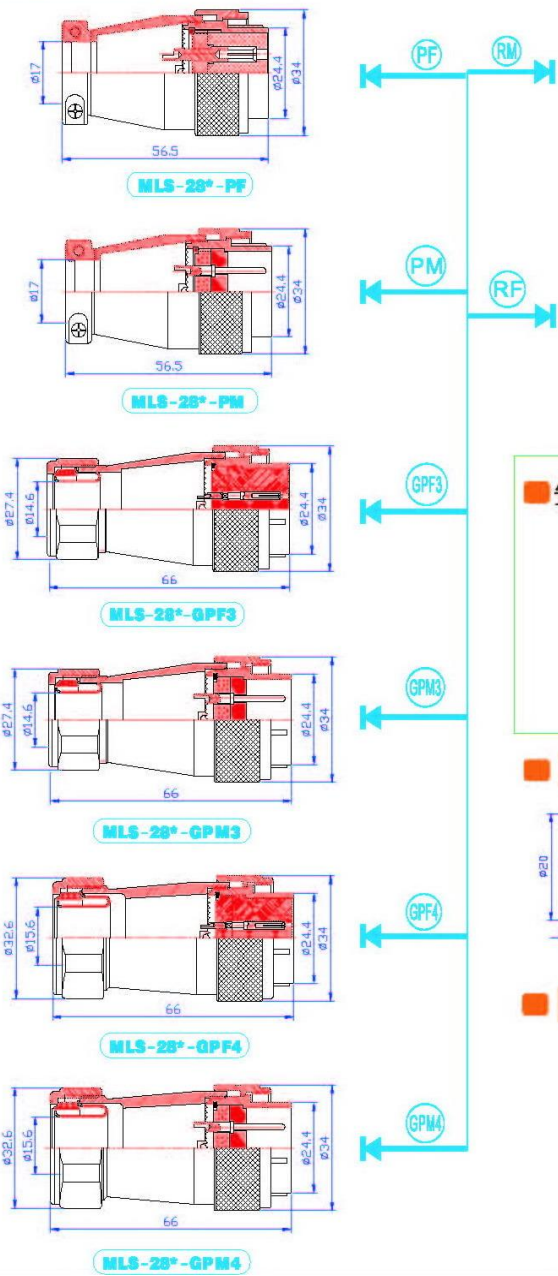


孔組排列樣式 (從插針方向看)

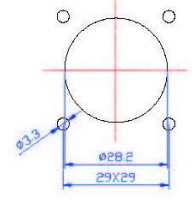


MLS-28*-**尺寸圖

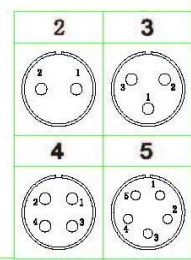
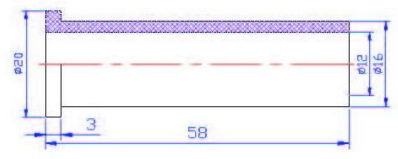
尺寸及裝配樣式



安裝面板建議開孔尺寸



附件



孔組排列樣式 (從插針方向看)

