

# J12金属按钮开关 Metal button switch



## ■ 特性 / Features

- 安装直径12mm
- 防护等级：IP65/IP67/IK10
- 触点银镀金：3μ
- LED超高亮冷光源灯显示
- 可定制图案，颜色及尺寸

公司电子样本浏览手机网站

[www.wzjh.cc](http://www.wzjh.cc)

了解公司最新动态及相关信息与成功应用情况



微信二维码

[www.wzjh.cc](http://www.wzjh.cc)

扫一扫，更精彩……

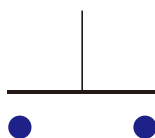


## ■ 符合标准 / Standard

符合IEC60947-5-1 GB14048.5标准  
Conform to IEC60947-5-1 GB14048.5 Standard

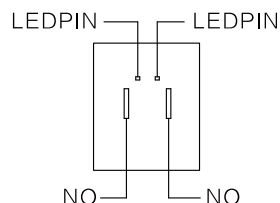
## ■ 触点方式

### Contact Style

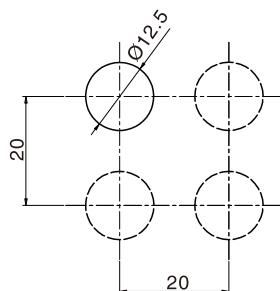


## ■ 端子描述

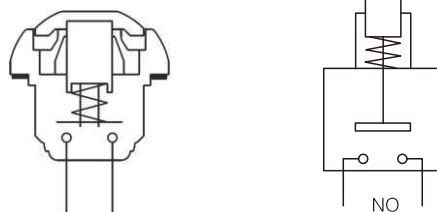
### Terminal Description



## ■ 安装尺寸 / Install Size



## ■ 结构图 / Structure diagram



## ■ 开关结构说明 / Switching Operation

型式Type	No.1	No.2	No.3
符号Sign			
示意图Diagram			
说明Explanation	<p>具有两个端子的双断电慢动触头开关个别产品可定制Y型常闭开关，详见产品说明 Using two terminals, double-break and slow-motion contact. Y type NC switch can be made to order for individual product, pls check the product description.</p>		

## ■ 额定参数/Rating

工作电压 Working voltage		24V	110V	220V	
接触参数 Contact Parameter	AC (50/60Hz)	阻性	—	1.0A	
		感性	—	0.7A	
	DC	阻性	1.0A	0.2A	—
		感性	0.7A	0.1A	—

## J12 金属按钮开关命名方式 The naming definition of J12 metal push button switch

J12	-					-	
安装尺寸 Install Size	动作方式 Action Style:	头部形状 Shape of Top:	触点形式 Contact Type:	颜色/Color:	电压/Voltage:	材料/Material:	
	2:自复按钮 3:自锁按钮 2:Momentary 3:Maintained	1:平头 2:高位头 6:高面带灯 8:点头带灯 9:高点面带灯 1: Flat Round 2: High Round 6: High Ring Illumated 8: Dot Illumated 9: High Dot Illumated	1:1NO+1NC 2:2NO+2NC	R 红色 / Red G 绿色 / Green B 蓝色 / Blue W 白色 / White Y 黄色 / Yellow	D:24VDC E:12VDC F:6.3VDC A1:110VAC A2:220VAC	Ni:不锈钢 T:铜镀镍 G:铜镀铬 Ni:Stainless steel T: Copper Plated Ni G: Copper plated Cr	

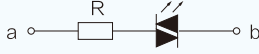
注：常规的定制都是不锈钢外壳，如需铜镀镍外壳，请在型号后面加T；如需铜镀铬外壳，请在型号后面加G

Note: The regular material is Stainless steel, if you want Copper Plated with Ni, please add T behind, if you want Copper Plated Cr, please add G behind.

## 触点规格 Contact Ratings

额定绝缘电压 Rated insulation voltage	250				
发热电流 Heating current I <sub>th</sub>	3A温度不超过最大额定值所允许的电流 Temperature does not exceed the maximum allowed current				
额定使用电压 Rated voltage	12V	24V	110V	220V	
额定使用电流 Rated current	交流AC 50/60Hz	电阻性负载 Resistive load	-	5A	3A
	直流DC	电感性负载 Inductive load	-	3A	2A
电阻性负载 Resistive load		5A	5A	1A	0.5A
电感性负载 Inductive load	2A	2A	0.2A	0.1A	
触点材料 Contact material	银镀金 Silver Plated Gold				

## 灯珠规格 Lamp Ratings

灯珠类型 Lamp Type	双向LED灯珠(交直流通用) LED lamp(AC/DC)
额定电压 Rated Voltage	3V,6V,12V,24V,36V,110V,220VAC/DC
额定电流 Rated Current	约15mA 约2mA About 15mA About 2mA
发光颜色 LED Color	R G Y O B W
寿命 Life	40000小时(参考值) 40000 hours(Reference)
灯珠等效电路 Lamp Circuit diagram	 <p>内置电阻：采用6V灯珠，需外接电阻。 采用交直流通用的LED灯珠，接线端子无正负极区分；60V以下灯珠已内置保护电阻； Using AC/DC LED lamp, the terminals have no difference of anode and cathode: Using inner resistance for the lamp below 60V. Using 6V lamp when the lamp voltage is above 60V, and need connect outer dropping resistance.</p>

注：如需单向直流LED灯珠可定做；其他电压规格可按需求定做。  
DC LED and other voltage can be made to order.

J系列三色灯金属按钮

带电源符号按钮

金属信号灯

经济型金属按钮

金属按钮

Ø12

金属按钮

Ø16

金属按钮

Ø19

金属按钮

Ø22

金属按钮

Ø25

金属按钮

Ø30

金属按钮

Ø40

金属按钮

# 防水型金属按钮

Ø12

金属按钮

Ø16

金属按钮

Ø19

金属按钮

Ø22

金属按钮

Ø25

金属按钮

Ø30

金属按钮

Ø40

金属按钮

## 主要技术参数 Technical Parameter

保护等级/Degree of Protection	IP67
触点类型/Contact Type	C:1NO+1NC
最大电压/Maximum Voltage	250V AC/DC
热流/Thermal Current	3A
最小负载/Minimum Applicable Load	5V AC/DC, 1mA
触点材料/Contact material	Silver plated glod
端子形式/Terminal Style	.110" Solder/ Quick Connect
运行温度/Operating Temperature	-25° to +55°C
操作湿度/Operating Humidity	45 to 85% RH
接触电阻/Contact Resistance	50MΩ maximum
绝缘电阻/Insulation Resistance	100MΩ minimum (500V DC megger)
震荡电阻/Vibration Resistance	10 to 55Hz, amplitude 1.2mm p-p
保护等级/Degree of Protection	>10g
电气寿命/Electrical Life	100,000 operations minimum (at full rated load)
机械寿命/Mechanical Life	Maintained: 1,000,000 operations minimum Momentary: 1,000,000 operations minimum
耐压/Dielectrical Life	Switch Unit: 2,000V AC, 1 min. between live/dead part and terminals of different poles; 1,000V AC, 1 minute between terminals of the same pole; 1,500V AC, 1 minute between contact and lamp terminals. Illumination Unit: 2,000V AC, 1 min. between live part/ground
锡焊温度/Soldering Temperature	20W/5 seconds or 260°C/3 seconds

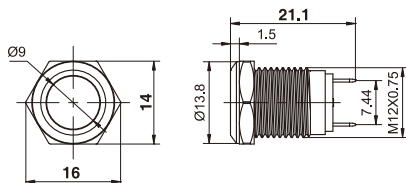
## Ø12金属防水按钮开关 Metal Waterproof Push Button Switch

名称/外观 Product appearance	带灯形式 Illuminated type	操作类别 Operation	触点 Contact	产品型号 Model	外壳材料 Crust Material
实面圆形 / Flat round 	不带灯 Without LED	自复 Momentary	1NO+1NC	<b>J12-211</b>	Ni:不锈钢 T:铜镀镍 G:铜镀铬 Ni:Stainless steel T: Copper Plated Ni G: Copper plated Cr
高面圆形 / High round 	不带灯 Without LED	自复 Momentary	1NO+1NC	<b>J12-221</b>	

### 平钮



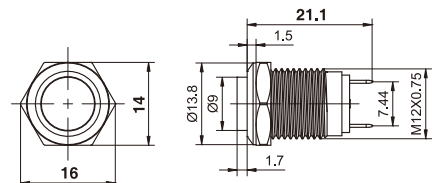
单刀/1Pole






### 高位钮



单刀/1Pole



## Ø12带灯金属防水按钮开关 Metal Waterproof Push Button Switch with LED

名称/外观 Product appearance	带灯形式 Illuminated type	操作类别 Operation	触点 Contact	产品型号 Model	外壳材料 Crust Material	带灯颜色 Color	额定电压 Rated Voltage
高面环形圆形 / High ring round 	带灯 With LED	自复 Momentary	1NO+1NC	<b>J12-261</b> □●	Ni:不锈钢 T:铜镀镍 G:铜镀铬 Ni:Stainless steel T: Copper Plated Ni G: Copper plated Cr	请用下列颜色编码 替换型号中的"□"  <b>R</b> 红色/Red <b>G</b> 绿色/Green <b>Y</b> 黄色/Yellow <b>W</b> 白色/White <b>B</b> 蓝色/Blue	请用下列颜色编码 替换型号中的"●"  D:24VDC E:12VDC F:6.3VDC A1:110VAC A2:220VAC
实面点头圆形 / High point round 	带灯 With LED	自复 Momentary	1NO+1NC	<b>J12-281</b> □●			
高面点头圆形 / High point round 	带灯 With LED	自复 Momentary	1NO+1NC	<b>J12-291</b> □●			

J 系列三色灯金属按钮

带电源符号按钮

金属信号灯

经济型金属按钮

金属按钮

Ø12

金属按钮

Ø16  
金属按钮

Ø19  
金属按钮

Ø22  
金属按钮

Ø25  
金属按钮

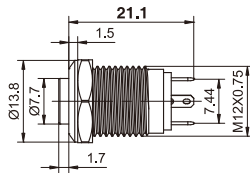
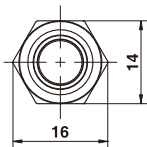
Ø30  
金属按钮

Ø40  
金属按钮

高位钮带灯



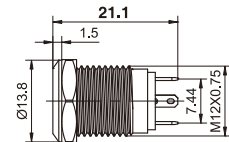
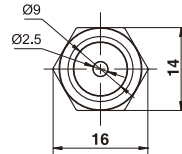
单刀/1Pole



平钮带点头灯



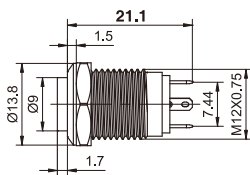
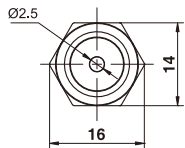
单刀/1Pole



高位钮带点头灯



单刀/1Pole



# 防水型金属按钮

## Ø12金属防水按钮开关 Metal Waterproof Push Button Switch

名称/外观 Product appearance	带灯形式 Illuminated type	操作类别 Operation	触点 Contact	产品型号 Model	外壳材料 Crust Material
实面圆形 / Flat round 	不带灯 Without LED	自锁 Maintained	1NO+1NC	<b>J12-311</b>	Ni:不锈钢 T:铜镀镍 G:铜镀铬 Ni:Stainless steel T: Copper Plated Ni G: Copper plated Cr
高面圆形 / High round 	不带灯 Without LED	自锁 Maintained	1NO+1NC	<b>J12-321</b>	

Ø12

金属按钮

Ø16

金属按钮

Ø19

金属按钮

Ø22

金属按钮

Ø25

金属按钮

Ø30

金属按钮

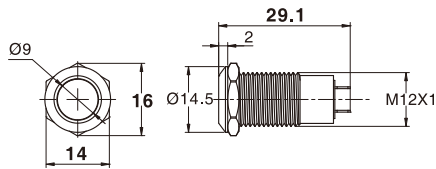
Ø40

金属按钮

平钮



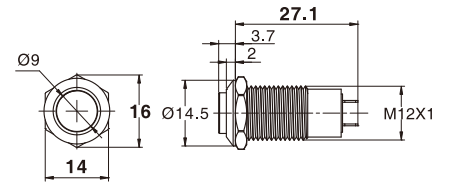
单刀/1Pole






高位钮



单刀/1Pole



## Ø12带灯金属防水按钮开关 Metal Waterproof Push Button Switch with LED

名称/外观 Product appearance	带灯形式 Illuminated type	操作类别 Operation	触点 Contact	产品型号 Model	外壳材料 Crust Material	带灯颜色 Color	额定电压 Rated Voltage
高面环形圆形 / High ring round 	带灯 With LED	自锁 Maintained	1NO+1NC	<b>J12-361</b> □●	Ni:不锈钢 T:铜镀镍 G:铜镀铬 Ni:Stainless steel T: Copper Plated Ni G: Copper plated Cr	请用下列颜色编码替换型号中的"□" <b>R</b> 红色/Red <b>G</b> 绿色/Green <b>Y</b> 黄色/Yellow <b>W</b> 白色/White <b>B</b> 蓝色/Blue	请用下列颜色编码替换型号中的"●" D:24VDC E:12VDC F:6.3VDC A1:110VAC A2:220VAC
实面点头圆形 / High point round 	带灯 With LED	自锁 Maintained	1NO+1NC	<b>J12-381</b> □●			
高面点头圆形 / High point round 	带灯 With LED	自锁 Maintained	1NO+1NC	<b>J12-391</b> □●			

J 系列三色灯金属按钮

带电源符号按钮

金属信号灯

经济型金属按钮

金属按钮

Ø12

金属按钮

Ø16

金属按钮

Ø19

金属按钮

Ø22

金属按钮

Ø25

金属按钮

Ø30

金属按钮

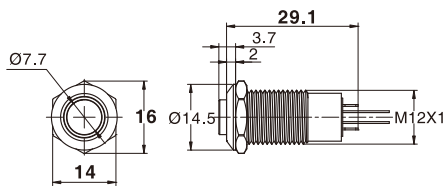
Ø40

金属按钮

高位钮带灯



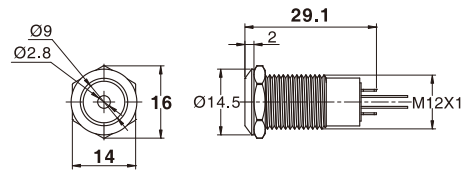
单刀/1Pole



平钮带点头灯



单刀/1Pole



高位钮带点头灯



单刀/1Pole

