

EJ经济型金属按钮

Economical Metal Button Switch



■ 特性 / Features

- 安装直径12/16/19mm
- 防护等级: IP65/IP67/IK10
- 触点银镀金: 3 μ
- LED超高亮冷光源灯显示
- 专用特殊磨砂不锈钢环, 整体
- 美观, 高级, 时尚

公司电子样本浏览手机网站

www.wzjh.cc

了解公司最新动态及相关信息与成功应用情况



微信二维码

www.wzjh.cc

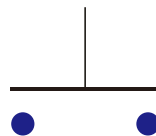
扫一扫, 更精彩……



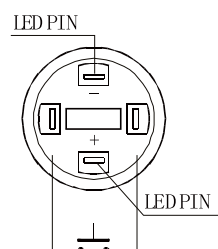
■ 符合标准 / Standard

符合IEC60947-5-1 GB14048.5标准
Conform to IEC60947-5-1 GB14048.5 Standard

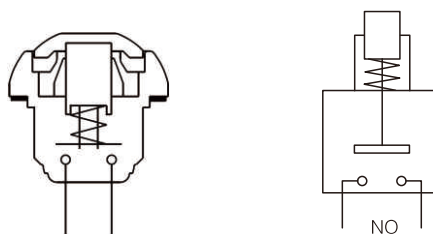
■ 触点方式 / Contact Style



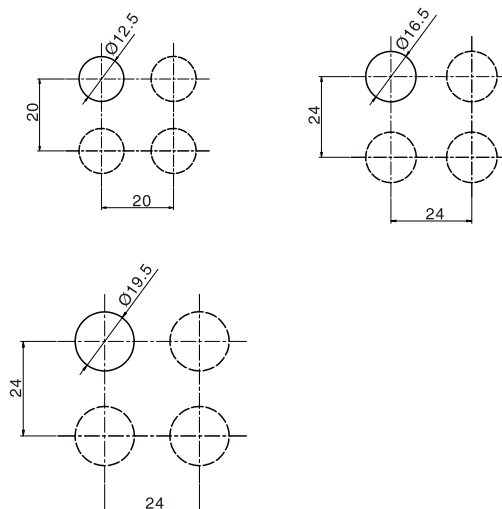
■ 端子描述 / Terminal Description



■ 结构图 / Structure diagram



■ 安装尺寸 / Install Size



EJ金属按钮开关命名方式 The naming definition of EJ economical metal push button switch

	—					—			
安装尺寸 Install Size		动作方式 Action Style:	头部形状 Shape of Top:	触点形式 Contact Type:	安装方式 Install Style:		颜色/Color:	电压/Voltage:	材料/Material:
12mm 16mm 19mm		2:自复按钮 3:自锁按钮 2:Momentary 3:Maintained	1:平头 2:高位头 3:弧面头 6:高面带灯 7:平面带灯 8:点头带灯 9:高面带灯 A:弧面带灯 1: Flat Round 2: High Round 3: Domed 6: High Ring Illumated 7: Ring Illumated 8: Dot Illumated 9: High Dot Illumated A: Domed Illumated	1:1NO 1C:1NC	A:螺丝型 Screw Type P:焊线型 PCB Type		R 红色 / Red G 绿色 / Green B 蓝色 / Blue W 白色 / White Y 黄色 / Yellow S 金属色 / Metal	D:24VDC E:12VDC F:6.3VDC A1:110VAC A2:220VAC	Ni:不锈钢 T:铜镀镍 A:铝 G:铜镀铬 B:铜镀黑色 Ni:Stainless steel T: Copper Plated Ni A: Aluminium G: Copper plated Cr B: Copper plated with black

注：常规的定制都是不锈钢外壳，如需铜镀镍外壳，请在型号后面加T；如需铜镀铬外壳，请在型号后面加G

Note: The regular material is Stainless steel, if you want Copper Plated with Ni ,please add T behind ,if you want Copper Plated Cr , please add G behind.

触点规格 Contact Ratings

额定绝缘电压 Rated insulation voltage	250					
发热电流 Heating current Ith	3A温度不超过最大额定值所允许的电流 Temperature does not exceed the maximum allowed current					
额定使用电压 Rated voltage	12V	24V	110V	220V		
额定使用电流 Rated current	交流AC 50/60Hz	电阻性负载 Resistive load	-	-	5A	3A
		电感性负载 Inductive load	-	-	3A	2A
	直流DC	电阻性负载 Resistive load	5A	5A	1A	0.5A
		电感性负载 Inductive load	2A	2A	0.2A	0.1A
触点材料 Contact material	银镀金 Silver Plated Gold					

灯珠规格 Lamp Ratings

灯珠类型 Lamp Type	双向LED灯珠(交直流通用) LED lamp(AC/DC)
额定电压 Rated Voltage	3V,6V,12V,24V,36V,110V,220VAC/DC
额定电流 Rated Current	约15mA 约2mA About 15mA About 2mA
发光颜色 LED Color	R G Y O B W
寿命 Life	40000小时(参考值) 40000 hours(Reference)
灯珠等效电路 Lamp Circuit diagram	<p>内置电阻：采用6V灯珠，需外接电阻。 Using AC/DC LED lamp, the terminals have no difference of anode and cathode: Using inner resistance for the lamp below 60V. Using 6V lamp when the lamp voltage is above 60V, and need connect outer dropping resistance.</p>

注：如需单向直流LED灯珠可定做；其他电压规格可按需求定做。
DC LED and other voltage can be made to order.

J系列三色灯金属按钮

带电源符号按钮

金属信号灯

经济型金属按钮

金属按钮

Ø12

经济型金属按钮

Ø16

经济型金属按钮

Ø19

经济型金属按钮

Ø22

经济型金属按钮

主要技术参数 Technical Parameter

保护等级/Degree of Protection	IP67
触点类型/Contact Type	1 NO/1NC 可定制
最大电压/Maximum Voltage	250V AC/DC
热流/Thermal Current	2A
最小负载/Minimum Applicable Load	5V AC/DC, 1mA
触点材料/Contact material	Silver plated
端子形式/Terminal Style	.110" Solder/ Quick Connect
运行温度/Operating Temperature	-25° to +55°C
操作湿度/Operating Humidity	45 to 85% RH
接触电阻/Contact Resistance	50MΩ maximum
绝缘电阻/Insulation Resistance	100MΩ minimum (500V DC megger)
震荡电阻/Vibration Resistance	10 to 55Hz, amplitude 1.2mm p-p
保护等级/Degree of Protection	>10g
电气寿命/Electrical Life	100,000 operations minimum (at full rated load)
机械寿命/Mechanical Life	Maintained: 1,000,000 operations minimum Momentary: 1,000,000 operations minimum
耐压/Dielectrical Life	Switch Unit: 2,000V AC, 1 min. between live/dead part and terminals of different poles; 1,000V AC, 1 minute between terminals of the same pole; 1,500V AC, 1 minute between contact and lamp terminals. Illumination Unit: 2,000V AC, 1 min. between live part/ground
锡焊温度/Soldering Temperature	20W/5 seconds or 260°C/3 seconds

注：* 详细型号分类参考(金属按钮开关命名方式表)

Ø12
经济型金属按钮


Ø16
经济型金属按钮

Ø19
经济型金属按钮

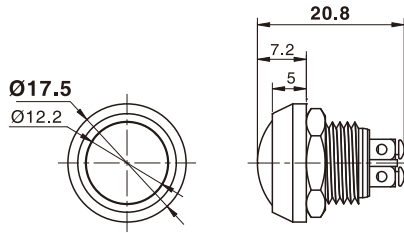
Ø22
经济型金属按钮

Ø12经济型金属按钮 Metal Waterproof Push Button Switch

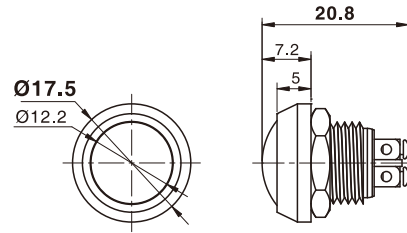
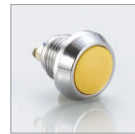
名称/外观 Product appearance	安装方式 Install Style	操作类别 Operation	触点 Contact	产品型号 Model	颜色 Color	额定电压 Rated Voltage	外壳材料 Crust Material
弧面圆形 / Domed round 	螺丝型 Screw Type	自复 Momentary	1NO+1NC	EJ12-231AS	R 红色/Red G 绿色/Green B 蓝色/Blue W 白色/White Y 黄色/Yellow S 金属色/Metal	D:24VDC E:12VDC F:6.3VDC A1:110VAC A2:220VAC	Nil:不锈钢 T:铜镀镍 A:铝 G:铜镀铬 B:铜镀黑色 Nil:Stainless steel T: Copper Plated Ni A: Aluminium G: Copper plated Cr B: Copper plated with black
弧面圆形 / Domed round 	螺丝型 Screw Type	自复 Momentary	1NO+1NC	EJ12-231AY			
弧面圆形 / Domed round 	焊线型 PCB Type	自复 Momentary	1NO+1NC	EJ12-231PBA			

名称/外观 Product appearance	带灯形式 Illuminated type	操作类别 Operation	触点 Contact	产品型号 Model	颜色 Color	额定电压 Rated Voltage	外壳材料 Crust Material
弧面圆形 / Domed round 	螺丝型 Screw Type	自复 Momentary	1NO+1NC	EJ12-231ARA	R 红色/Red G 绿色/Green B 蓝色/Blue W 白色/White Y 黄色/Yellow S 金属色/Metal	D:24VDC E:12VDC F:6.3VDC A1:110VAC A2:220VAC	Ni:不锈钢 T:铜镍 A:铝 G:铜镀铬 B:铜镀黑色 Ni:Stainless steel T: Copper Plated Ni A: Aluminium G: Copper plated Cr B: Copper plated with black

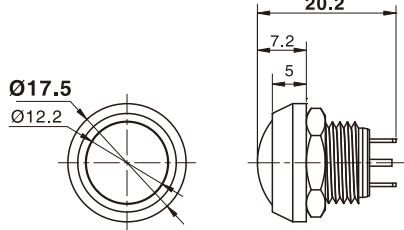
弧钮螺丝型



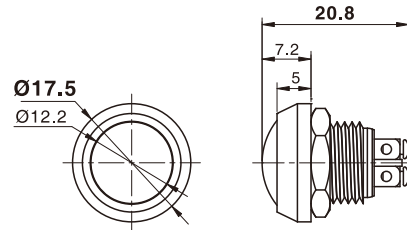
弧钮螺丝型



弧钮焊线型(铝)



弧钮螺丝型(铝)



J 系列三色灯金属按钮

带电源符号按钮

金属信号灯

经济型金属按钮

金属按钮

Ø12

经济型金属按钮

Ø16

经济型金属按钮




Ø19

经济型金属按钮

Ø22

经济型金属按钮

Ø16经济型金属按钮 Metal Waterproof Push Button Switch

名称/外观 Product appearance	带灯形式 Illuminated type	操作类别 Operation	触点 Contact	产品型号 Model	外壳材料 Crust Material
实面圆形 / Flat round 	不带灯 Without LED	自复 Momentary	1NO	EJ16-211P	Nil:不锈钢 T:铜镀镍 A:铝 G:铜镀铬 B:铜镀黑色 Nil:Stainless steel T: Copper Plated Ni A: Aluminium G: Copper plated Cr B: Copper plated with black
高面圆形 / High round 	不带灯 Without LED	自复 Momentary	1NO	EJ16-221P	
弧面圆形 / Domed round 	不带灯 Without LED	自复 Momentary	1NO	EJ16-231P	

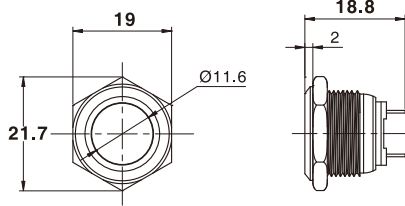
Ø12
经济型金属按钮

Ø16
经济型金属按钮

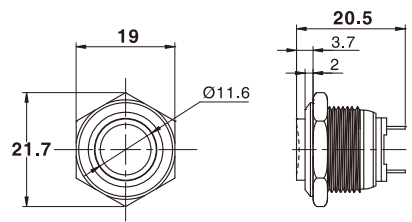
Ø19
经济型金属按钮

Ø22
经济型金属按钮

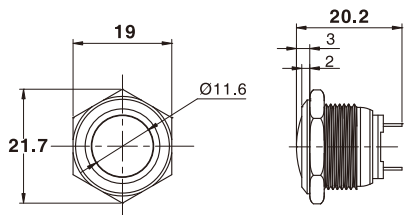
平钮焊线型






高位钮焊线型



弧钮焊线型



名称/外观 Product appearance	带灯形式 Illuminated type	操作类别 Operation	触点 Contact	产品型号 Model	外壳材料 Crust Material
实面圆形 / Flat round 	不带灯 Without LED	自复 Momentary	1NO	EJ16-211A	Ni: 不锈钢 T: 铜镀镍 A: 铝 G: 铜镀铬 B: 铜镀黑色 Ni: Stainless steel T: Copper Plated Ni A: Aluminium G: Copper plated Cr B: Copper plated with black
高面圆形 / High round 	不带灯 Without LED	自复 Momentary	1NO	EJ16-221A	
弧面圆形 / Domed round 	不带灯 Without LED	自复 Momentary	1NO	EJ16-231A	

J 系列三色灯金属按钮

带电源符号按钮

金属信号灯

经济型金属按钮

金属按钮

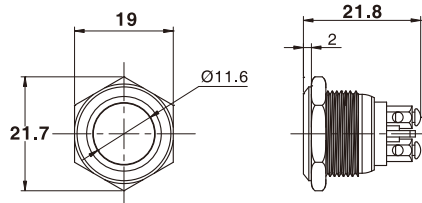
Ø12
经济型金属按钮

Ø16
经济型金属按钮

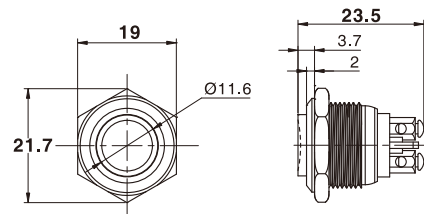
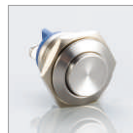
Ø19
经济型金属按钮

Ø22
经济型金属按钮

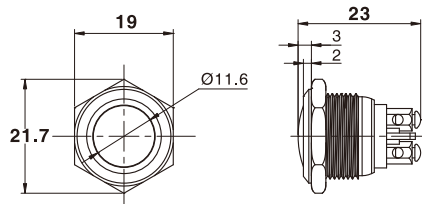
平钮螺丝型



高位钮螺丝型



弧钮螺丝型



经济型金属按钮

Ø12
经济型金属按钮

Ø16
经济型金属按钮

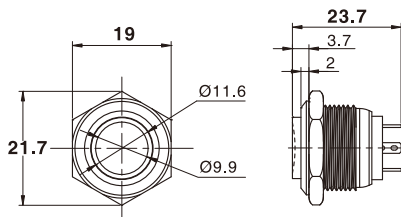
Ø19
经济型金属按钮

Ø22
经济型金属按钮

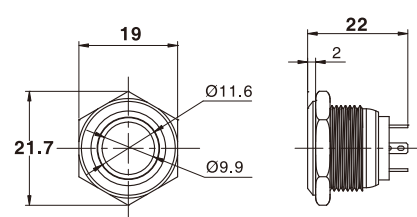
Ø16经济型带灯金属按钮 Metal Waterproof Push Button Switch with LED

名称/外观 Product appearance	带灯形式 Illuminated type	操作类别 Operation	触点 Contact	产品型号 Model	外壳材料 Crust Material	带灯颜色 Color	额定电压 Rated Voltage
高面环形圆形 / High ring round 	带灯 With LED	自复 Momentary	1NO	EJ16-261P □●	NiI: 不锈钢 T: 铜镀镍 A: 铝 G: 铜镀铬 B: 铜镀黑色 NiI: Stainless steel T: Copper Plated Ni A: Aluminium G: Copper plated Cr B: Copper plated with black	请用下列颜色编码 替换型号中的"□" R 红色/Red G 绿色/Green Y 黄色/Yellow W 白色/White B 蓝色/Blue	请用下列颜色编码 替换型号中的"●" D: 24VDC E: 12VDC F: 6.3VDC A1: 110VAC A2: 220VAC
实面环形圆形 / Flat ring round 	带灯 With LED	自复 Momentary	1NO	EJ16-271P □●			
实面点头圆形 / High point round 	带灯 With LED	自复 Momentary	1NO	EJ16-281P □●			
高面点头圆形 / High point round 	带灯 With LED	自复 Momentary	1NO	EJ16-291P □●			

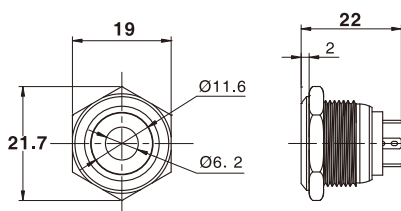
高位钮带灯



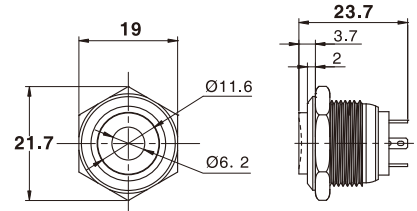
平钮带灯









平钮带点头灯



高位钮带点头灯



Ø19经济型金属按钮 Metal Waterproof Push Button Switch

名称/外观 Product appearance	带灯形式 Illuminated type	操作类别 Operation	触点 Contact	产品型号 Model	外壳材料 Crust Material
实面圆形 / Flat round 	不带灯 Without LED	自复 Momentary	1NO	EJ19-211P	Nil:不锈钢 T:铜镀镍 A:铝 G:铜镀铬 B:铜镀黑色 Nil:Stainless steel T: Copper Plated Ni A: Aluminium G: Copper plated Cr B: Copper plated with black
高面圆形 / High round 	不带灯 Without LED	自复 Momentary	1NO	EJ19-221P	
弧面圆形 / Domed round 	不带灯 Without LED	自复 Momentary	1NO	EJ19-231P	
实面圆形 / Flat round 	不带灯 Without LED	自复 Momentary	1NO	EJ19-211A	
高面圆形 / High round 	不带灯 Without LED	自复 Momentary	1NO	EJ19-221A	
弧面圆形 / Domed round 	不带灯 Without LED	自复 Momentary	1NO	EJ19-231A	

J 系列三色灯金属按钮

带电源符号按钮

金属信号灯

经济型金属按钮

金属按钮

Ø12
经济型金属按钮

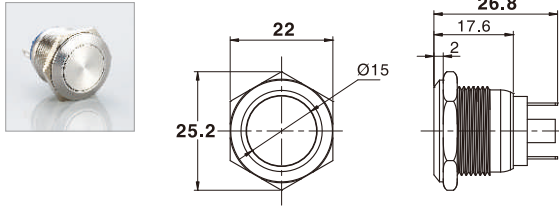
Ø16
经济型金属按钮

Ø19
经济型金属按钮

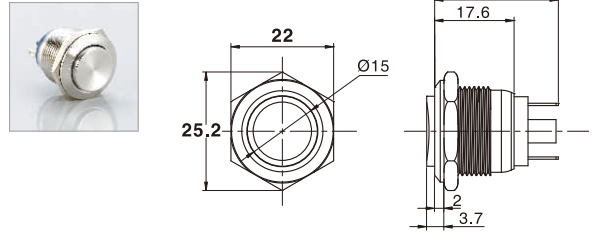
Ø22
经济型金属按钮

经济型金属按钮

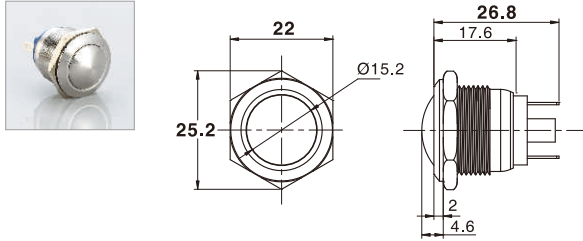
平钮焊线型



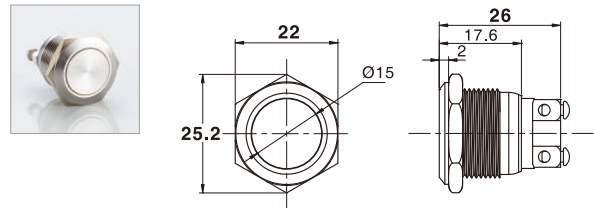
高位钮焊线型



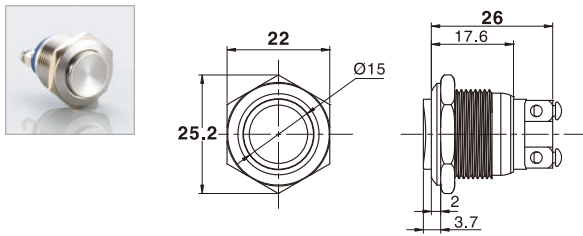
弧钮焊线型



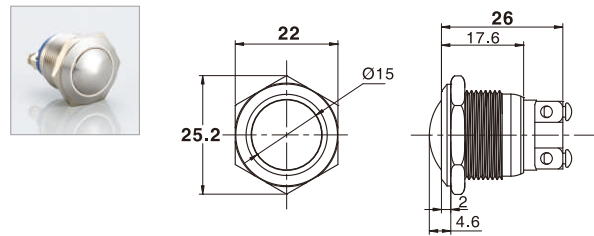
平钮螺丝型



高位钮螺丝型



弧钮螺丝型



Ø12
经济型金属按钮

Ø16
经济型金属按钮

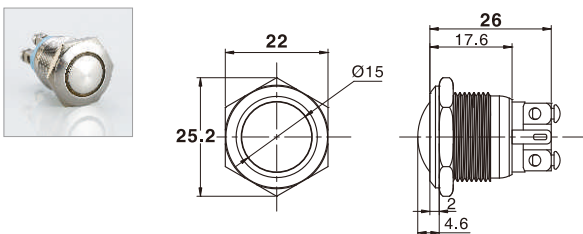
Ø19
经济型金属按钮

Ø22
经济型金属按钮

Ø19经济型带灯金属按钮 Metal Waterproof Push Button Switch with LED

名称/外观 Product appearance	带灯形式 Illuminated type	操作类别 Operation	触点 Contact	产品型号 Model	外壳材料 Crust Material	带灯颜色 Color	额定电压 Rated Voltage
环面圆形 / Ring round 	带灯 With LED	自复 Momentary	1NO	EJ19-2A1A□●	NiI: 不锈钢 T: 铜镀镍 A: 铝 G: 铜镀铬 B: 铜镀黑色 NiI: Stainless steel T: Copper Plated Ni A: Aluminium G: Copper plated Cr B: Copper plated with black	请用下列颜色编码 替换型号中的"□" R 红色/Red G 绿色/Green Y 黄色/Yellow W 白色/White B 蓝色/Blue	请用下列颜色编码 替换型号中的"●" D: 24VDC E: 12VDC F: 6.3VDC A1: 110VAC A2: 220VAC

弧钮带灯



Ø19经济型带灯金属按钮 Metal Waterproof Push Button Switch with LED

J系列三色灯金属按钮

带电源符号按钮

金属信号灯

经济型金属按钮

金属按钮

名称/外观 Product appearance	带灯形式 Illuminated type	操作类别 Operation	触点 Contact	产品型号 Model	外壳材料 Crust Material	带灯颜色 Color	额定电压 Rated Voltage
高面环形圆形 / High ring round 	带灯 With LED	自复 Momentary	1NO	EJ19-261P□●	NiI: 不锈钢 T: 铜镀镍 A: 铝 G: 铜镀铬 B: 铜镀黑色 NiI: Stainless steel T: Copper Plated Ni A: Aluminium G: Copper plated Cr B: Copper plated with black	请用下列颜色编码替换型号中的"□" R 红色/Red G 绿色/Green Y 黄色/Yellow W 白色/White B 蓝色/Blue	请用下列颜色编码替换型号中的"●" D: 24VDC E: 12VDC F: 6.3VDC A1: 110VAC A2: 220VAC
实面环形圆形 / Flat ring round 	带灯 With LED	自复 Momentary	1NO	EJ19-271P□●			
实面点头圆形 / High point round 	带灯 With LED	自复 Momentary	1NO	EJ19-281P□●			
高面点头圆形 / High point round 	带灯 With LED	自复 Momentary	1NO	EJ19-291P□●			

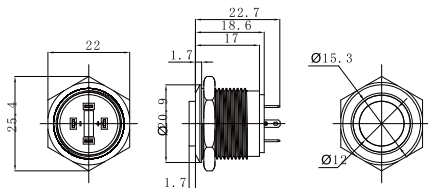
Ø12
经济型金属按钮

Ø16
经济型金属按钮

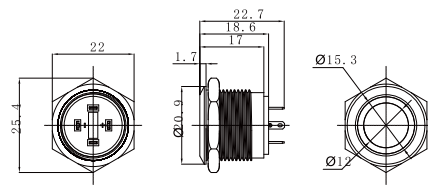
Ø19
经济型金属按钮

Ø22
经济型金属按钮

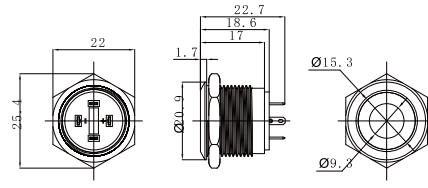
高位钮带灯



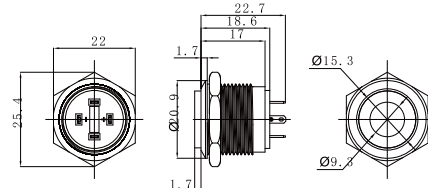
平钮带灯



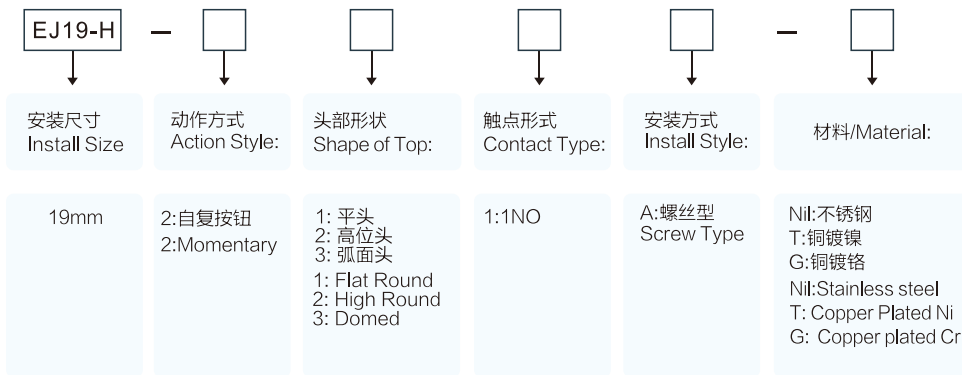
平钮带点头灯



高位钮带点头灯



EJ19-H金属按钮开关命名方式 The naming definition of EJ19-H economical metal push button switch



注: 常规的定制都是不锈钢外壳, 如需铜镀镍外壳, 请在型号后面加T; 如需铜镀铬外壳, 请在型号后面加G

Note: The regular material is Stainless steel, if you want Copper Plated with Ni, please add T behind, if you want Copper Plated Cr, please add G behind.

主要技术参数 Technical Parameter

保护等级/Degree of Protection	IP67
触点类型/Contact Type	1NO
最大电压/Maximum Voltage	250V AC/DC
热流/Thermal Current	2A
最小负载/Minimum Applicable Load	5V AC/DC, 1mA
触点材料/Contact material	Silver plated
端子形式/Terminal Style	.110" Solder/ Quick Connect
运行温度/Operating Temperature	-25° to +55°C
操作湿度/Operating Humidity	45 to 85% RH
接触电阻/Contact Resistance	50MΩ maximum
绝缘电阻/Insulation Resistance	100MΩ minimum (500V DC megger)
震荡电阻/Vibration Resistance	10 to 55Hz, amplitude 1.2mm p-p
保护等级/Degree of Protection	>10g
电气寿命/Electrical Life	100,000 operations minimum (at full rated load)
机械寿命/Mechanical Life	Maintained: 1,000,000 operations minimum Momentary: 1,000,000 operations minimum
耐压/Dielectrical Life	Switch Unit: 2,000V AC, 1 min. between live/dead part and terminals of different poles; 1,000V AC, 1 minute between terminals of the same pole; 1,500V AC, 1 minute between contact and lamp terminals. Illumination Unit: 2,000V AC, 1 min. between live part/ground
锡焊温度/Soldering Temperature	20W/5 seconds or 260°C/3 seconds

Ø12
经济型金属按钮

Ø16
经济型金属按钮

Ø19
经济型金属按钮

Ø22
经济型金属按钮

EJ19-H经济型金属按钮 Metal Waterproof Push Button Switch




J系列三色灯金属按钮

带电源符号按钮

金属信号灯

经济型金属按钮

金属按钮

名称/外观 Product appearance	带灯形式 Illuminated type	操作类别 Operation	触点 Contact	产品型号 Model	外壳材料 Crust Material
实面圆形 / Flat round 	不带灯 Without LED	自复 Momentary	1NO	EJ19-H211A	Ni: 不锈钢 T: 铜镀镍 G: 铜镀铬 Ni: Stainless steel T: Copper Plated Ni G: Copper plated Cr
高面圆形 / High round 	不带灯 Without LED	自复 Momentary	1NO	EJ19-H221A	
弧面圆形 / Domed round 	不带灯 Without LED	自复 Momentary	1NO	EJ19-H231A	

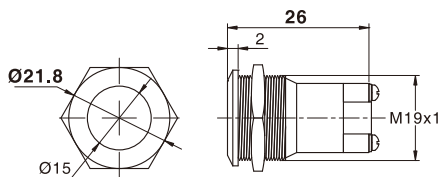
Ø12
经济型金属按钮

Ø16
经济型金属按钮

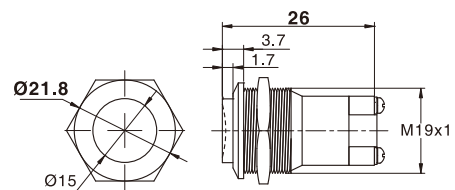
Ø19
经济型金属按钮

Ø22
经济型金属按钮

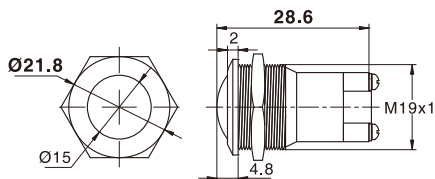
平钮螺丝型



高位钮螺丝型



弧钮螺丝型









NEW

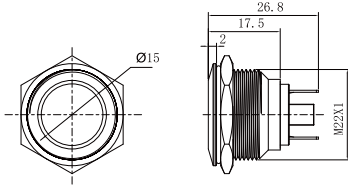
经济型金属按钮

Ø12
经济型金属按钮Ø16
经济型金属按钮Ø19
经济型金属按钮Ø22
经济型金属按钮

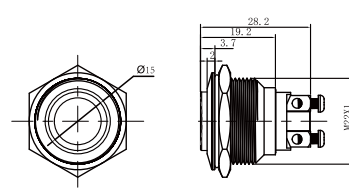
Ø22经济型带灯金属按钮 Metal Waterproof Push Button Switch with LED

名称/外观 Product appearance	带灯形式 Illuminated type	操作类别 Operation	触点 Contact	产品型号 Model	外壳材料 Crust Material
实面圆形 / Flat round 	不带灯 Without LED	自复 Momentary	1NO	EJ22-211P	Nil: 不锈钢 T: 铜镀镍 A: 铝 G: 铜镀铬 B: 铜镀黑色 Nil: Stainless steel T: Copper Plated Ni A: Aluminium G: Copper plated Cr B: Copper plated with black
高面圆形 / High round 	不带灯 Without LED	自复 Momentary	1NO	EJ22-221P	
弧面圆形 / Domed round 	不带灯 Without LED	自复 Momentary	1NO	EJ22-231P	
实面圆形 / Flat round 	不带灯 Without LED	自复 Momentary	1NO	EJ22-211A	
高面圆形 / High round 	不带灯 Without LED	自复 Momentary	1NO	EJ22-221A	
弧面圆形 / Domed round 	不带灯 Without LED	自复 Momentary	1NO	EJ22-231A	

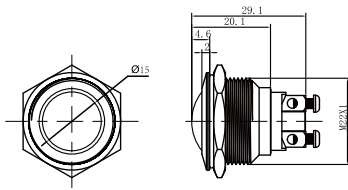
平钮焊线型



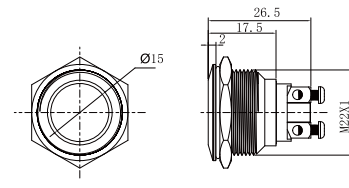
高位钮焊线型



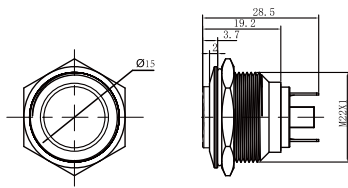
弧钮焊线型



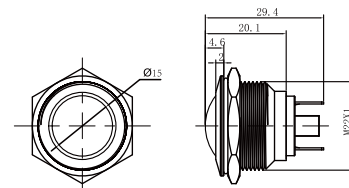
平钮螺丝型



高位钮螺丝型



弧钮螺丝型



J 系列三色灯金属按钮

带电源符号按钮

金属信号灯

经济型金属按钮

金属按钮

Ø12
经济型金属按钮

Ø16
经济型金属按钮

Ø19
经济型金属按钮

Ø22
经济型金属按钮