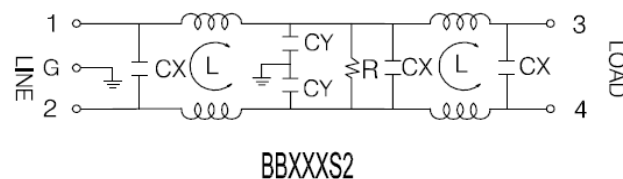
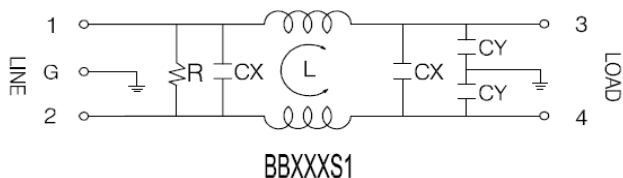




**APPLICATION**

- AIR CONDITION
- FITNESS
- CNC CONTROL SYSTEM
- POWER INVERTER
- REFRIGERATOR
- INDUSTRY MEASURE EQUIPMENT
- PLC SYSTEM

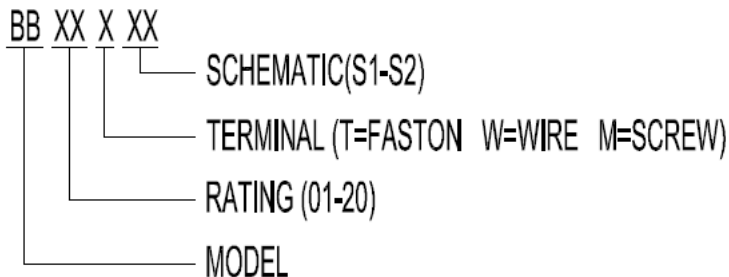
**SCHEMATIC**



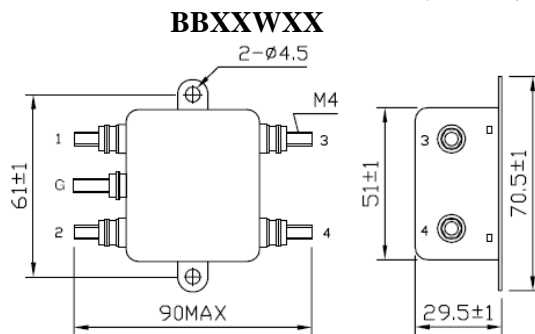
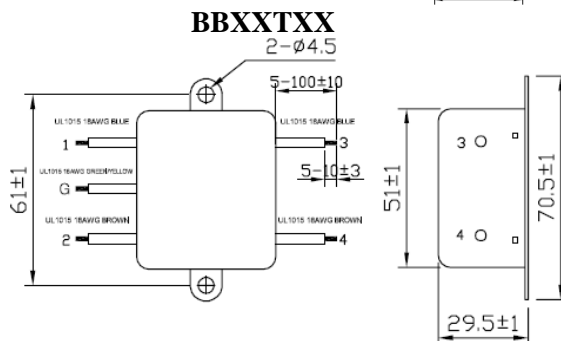
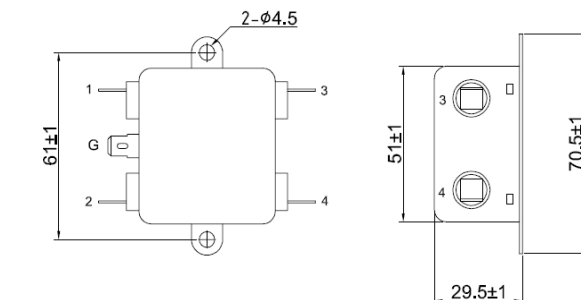
**SPECIFICATION**

RATED CURRENT	1A/3A/5A/6A/10A/15A/20A
RATED VOLTAGE	125VAC/250VAC
POWER LINE FREQUENCY	50/60Hz
HIPOT RATING LINE TO LINE	1450VDC
HIPOT RATING LINE TO GROUND	2250VDC
LEAKAGE CURRENT	0.8mA MAX
INSULATION RESISTANCE	100MΩ MIN 500V DC
TEMPERATURE RISE	30°C MAX.
OPERATING TEMPERATURE	-25~+85°C

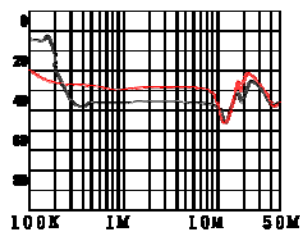
**ORDERING INFORMATION:**



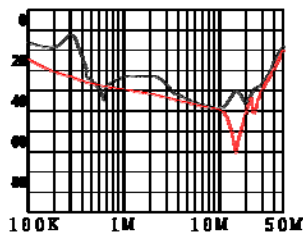
**PHYSICAL DIMENSIONS(mm)**



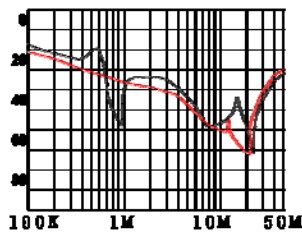
**BBXXMXX**



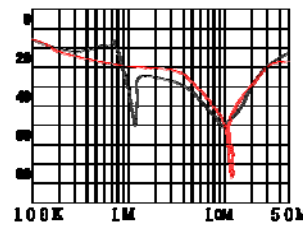
BB05



BB10



BB15



BB20

(— COMM.MODE(L-G)IN HZ —DIFF.MODE(L-L)IN HZ)